



NYU

SCHOOL OF  
PROFESSIONAL STUDIES

**Center for Global Affairs**

**INCELS:**

**INSIDE  
THE  
WORLD  
OF  
INVOLUNTARY  
CELIBATES**

---

Alexandra Woodward  
Christopher Wozniak  
Christie Vargas  
Mariapaola Girona  
Rayme Silverberg

**DECEMBER  
2021**

Manhattan District  
Attorney's Office  
of New York



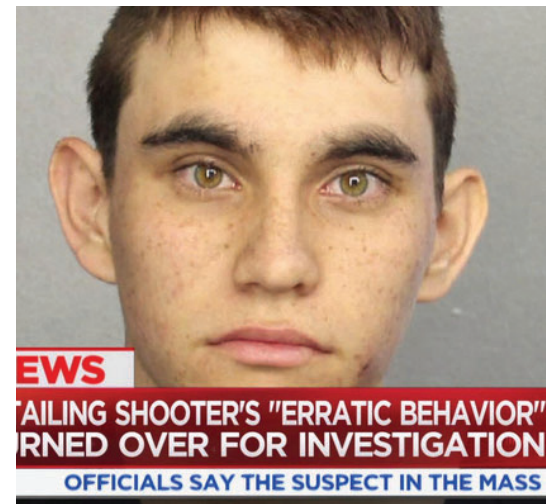
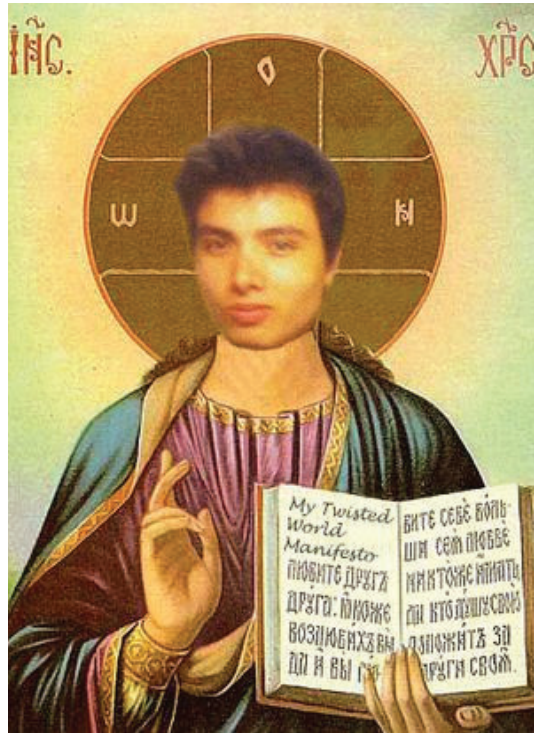
# TABLE OF CONTENTS

---

<b>01</b>	Who is an Incel?
<b>02</b>	Demographics
<b>03</b>	Risk Factors
<b>04</b>	The Manosphere
<b>05</b>	Ideology
<b>12</b>	The Radicalization Process
<b>13</b>	Key Terms
<b>15</b>	Potential for Violence
<b>16</b>	Potential Indicators of Mass Violence
<b>17</b>	Key Incel Attacks
<b>18</b>	Incel & Incel-Adjacent Attackers
<b>23</b>	Key Documents and Websites
<b>24</b>	References
<b>26</b>	Glossary

# WHO IS AN INCEL?

**Incels** (involuntary celibates) think all men are entitled to sex. They believe their inability to find sexual or romantic partners is the result of only their physical appearance and the increasing empowerment of women.





# DEMOGRAPHICS

---

## Age

Incels represent the youngest portion of the Manosphere, with some as young as 12 years old. Evidence suggests the majority are in the 18-30 year old range (see red box below), but there is also evidence that there is a meaningful population of incels even younger than 18 who have not been documented because they are minors. The existence of the organization Next Gen Men in Canada, which provides online discussion space for disaffected men ages 12-15, suggests there are a significant number of young adolescents vulnerable to incel ideology.<sup>1</sup>

## Employment

As of March 2020, 74.5% of incels reported being students or employed while 24% indicated they were not in education, employment, or training (NEET).<sup>2</sup> This is much higher than the average U.S. unemployment rate for 2020, which was approximately 8.1%.<sup>3</sup>

## Ethnicity

Incels come from diverse racial, ethnic, political, and religious backgrounds. A March 2020 poll of incels. co-found 54.8% of respondents self-identified as white while the rest identified as being equally divided between Black, Latino, Asian, Indian, Middle Eastern.<sup>4</sup> A number of incels identify as Muslim. Muslim incels are often not interested in accessing sex before marriage because of their Islamic faith, but still subscribe to key tenets of incel ideology.<sup>5</sup>

**82%**

**of users surveyed on incels.co reported they were between 18-30 years old, as of March 2020.<sup>6</sup>**

**39%**

**of Google searches for incel ideological content in the U.S., come from users 18-24 years old.<sup>7</sup>**

# RISK FACTORS

67.5%

of incels self-report  
“long-lasting”  
depression.<sup>8</sup>

74.1%

self-report  
experiencing constant  
anxiety and emotional  
distress.<sup>9</sup>



## Mental & Psychological

Research shows that social skill deficits, fixated thinking, and an inability to recognize danger cues may make individuals more susceptible to radicalization into incel ideology.<sup>10</sup>

**Incels are skeptical of therapy because it does not solve their perceived physical unattractiveness, which they believe prevents them from engaging in romantic and sexual relationships.**

Despite widespread admission of depression and psychological distress, only 51.5% of incels responded that they had tried therapy.<sup>11</sup>

## Abuse & Other Factors

Childhood trauma including sexual abuse, physical abuse, bullying, rejection, and social isolation may make men more vulnerable to incel ideology. Often incels report and hyper-fixate on unresolved negative experiences with a woman, such as a mother or a partner, or a misogynistic male figure.<sup>12</sup>

These factors may contribute to incels' misogyny and their perceived failure to achieve “societal standards of masculinity,” including their inability to find a romantic or sexual partner.<sup>13</sup> Depending on their age, incels may feel they have missed the “normal” timing for romantic and sexual relationships.<sup>14</sup>

# THE MANOSPHERE

Incels are part of the Manosphere, a loose amalgamation of interest groups for men's rights. The Manosphere has its roots in the Men's rights (men's liberation) movement which started in the 1970s in response to second-wave feminism. The entire Manosphere believes the "redpill" reality that men today are disadvantaged by society in comparison to women.

## THE FOUR MAIN GROUPS OF THE MANOSPHERE ARE:

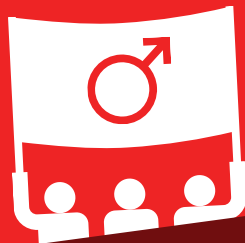


### Men Going Their Own Way (MGTOW)

An online community of men who believe that the world has been negatively impacted by feminism. MGTOW feel that there is a systemic bias against men and that they need to separate themselves from women. The official MGTOW forum was created in 2014.<sup>15</sup>

### Men's Rights Activists (MRAs)

Emerged as a backlash to feminism in the 1970s. They largely believe that men have lost their power, men's issues are overlooked, and men are oppressed in modern society. The first official MRAs' subreddit community was created in 2008.<sup>16</sup>



### Involuntary Celibates (Incels)

Believe that all men are entitled to sex and that being physically unattractive will prevent them from finding a romantic or sexual partner and living a fulfilling life.



Incels tend to be younger in age than members of other groups in the Manosphere.<sup>20</sup> Incels also differ in their belief that they cannot game the system and that other men with access to sex are also part of the problem. Although the first incel subreddit appeared online in 2010, it wasn't until 2014 that the community began to grow with the official creation of the subreddit r/incels.<sup>21</sup>

### Pick Up Artists (PUAs)

Believe they can "hack" the social system to become more desirable to women and have easier access to dating and sex. To do this, PUAs focus on their "inner game" and "outer game."

Inner game includes confidence and social skills while outer game includes exercise, grooming, and conversational skills. PUAs' mindset and strategies often objectify women and promote harassment.<sup>17</sup> The first PUA forum was created in 2008 although there was mention of the community as far back as 2005.<sup>18</sup> Research shows that some PUA forum users later migrate to incel forums.<sup>19</sup>



# IDEOLOGY

Incels believe that all men are **entitled to sex** and that their inability to find sexual or romantic partners is determined wholly by their physical appearance.

Incels subscribe to **lookism**, which claims there are evolutionary, objective standards of attractiveness and unattractiveness such as height or bone structure. These measurements transcend racial boundaries and are believed to have a similar effect on all women.

Lookism separates men and women into hierarchies of attractiveness. At the top of the male hierarchy are **Chads**, the ideal male archetype of physically attractive men (male alphas) who are deemed desirable and display traditional masculine characteristics.

Incels reference racialized versions of Chads including **Tyrone**, **Chadpreet**, and **Chang**. These racialized terms reflect the racial hierarchy many incels subscribe to that views white men as the most desirable. Despite such racism, incels often remain inclusive because of the unifying role celibacy plays in their identity.

Below Chads are **betas** or **normies**, men who are average in appearance and capable of maintaining a relationship. Incels believe that betas will eventually be cheated on and used for their money or otherwise by women. Women will leave a beta for a Chad if given the opportunity.

Incels believe that a minority of attractive men are monopolizing the majority of women. Incels call this the **80/20 rule** - meaning that 80% of women are being monopolized as romantic partners by 20% of the men.

At the bottom of the looks hierarchy are incels, who consider themselves fundamentally less physically attractive than Chads or betas and therefore unable to access sex. Incels may choose to describe themselves or other incels by their racial or ethnic identity using descriptors such as **blackcel**, **currycel**, **muslimcel**, and **ricecel**.<sup>22</sup>



MALE DECILE  
SCALE OF  
ATTRACTIVENESS



Despite having commonalities, incels ridicule one another on online forums for their mutual inability to access sex. Discussion between incels of their physical features on forums can lead to incels mocking one another's perceived physical shortcomings.

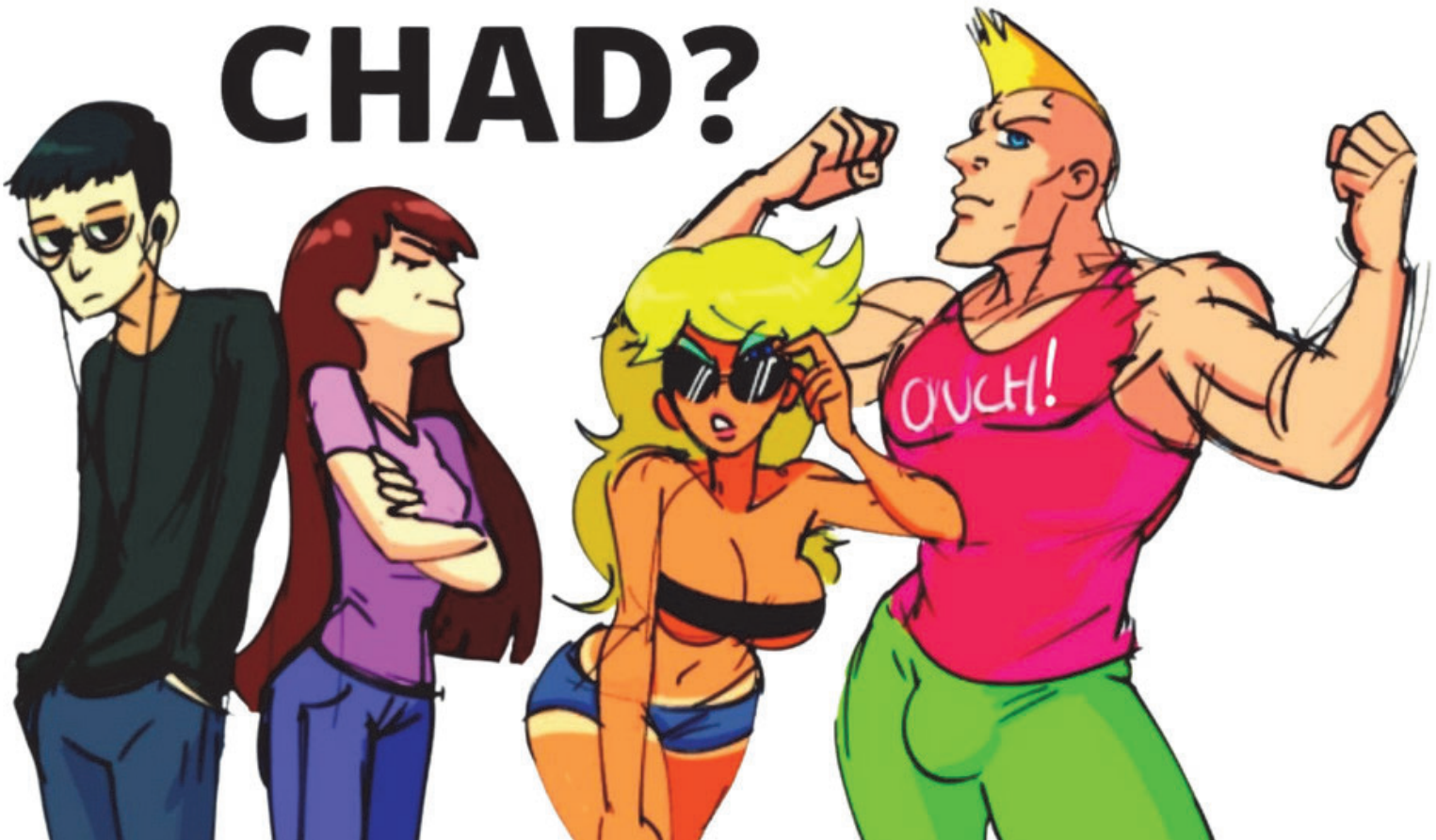
Incels view Chads with hostility because of their alleged monopolization of attractive women while betas are considered "**bluepilled**" fools who are exploited for money and security by women that will leave them at the first opportunity to be with a Chad.

Incels consider themselves to be intelligent "high IQ" men who are capable partners and only understood by their "in-group" of fellow incels.

They claim to hold traditional values and by being incels, are redpilled to see the "truth" about a world that is prejudiced against men. Incels consider themselves an under-appreciated romantic population capable of true love and not entirely guided by looks.

Incels are resistant to mental health care and mental health professionals because they view therapy as placing the blame for celibacy on incels themselves rather than the attractiveness-based hierarchy they believe they live in. This threatens the incel perspective that their inability to access sex is outside of their control and imposed by society by suggesting that behavioral changes are the solution to their celibacy.<sup>23</sup>

# CHAD?







## FEMALE DECILE SCALE OF ATTRACTIVENESS

### The incel community ranks women on physical attractiveness similarly to men.

At the top of the hierarchy are **Stacys**, physically attractive women (female alphas) who are considered unattainable romantic partners for most men. Incels believe Stacys use their status and feminism for their personal social and economic advantage. Incels believe that women try to have kids with attractive men who can pass on good genes, a practice called **hypergamy**.

Below Stacys are **Beckys**, women who are average in appearance and are the female equivalent to the male normie or beta. Incels believe Beckys want to be in sexual relationships with Chads, but will settle for less attractive men. Because Beckys are willing to date non-Chads and are less attractive than Stacys, incels believe they are entitled to sex and attention from Beckys.<sup>24</sup>

Their perceived social undesirability and inability to attain sex typically causes incels to hate all women.

This is due to their belief that incels are overlooked by women as sexual partners despite their positive non-physical qualities like intelligence and etiquette. Incels believe that women take advantage of their inherent “sexual market value” to exploit men for financial gain or increased social status and that feminism has made women less moral and submissive to men.

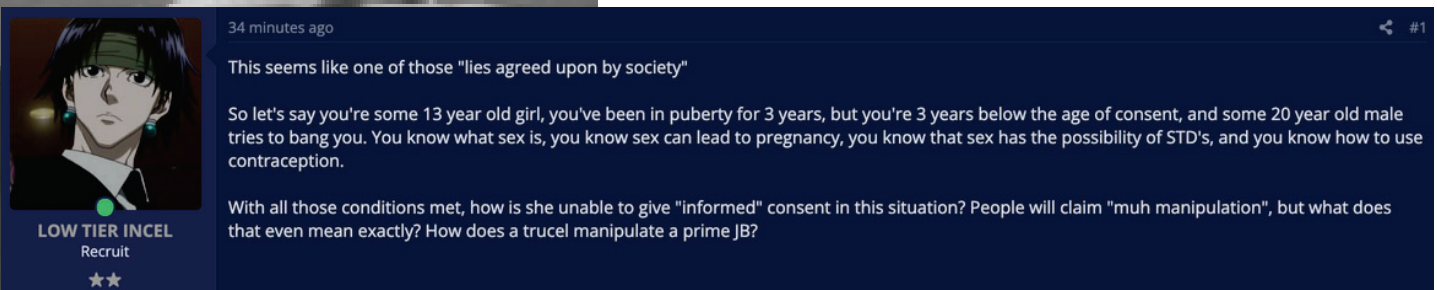
Incels believe women leverage feminism to claim oppression and leech benefits from the state. They also think the increased independence women have gained has caused a reduction in male social stature.<sup>25</sup> Incels consider women to be disloyal to men because they will allegedly cheat on their partners if another more attractive man is an option. Because of this singular female focus on physical features to determine partners, other men (e.g. incels) with better personalities and manners are not considered as romantic options.



# SEX WORKERS & CHILD SEXUAL EXPLOITATION

Some incels discuss the **exploitation of sex workers** and often carry a deep resentment toward them. There is an overlap between racism and resentment of Asian sex workers in online incel forums with some users posting that Asian women should have been aborted, while others recommend sexual tourism to countries in Asia where they feel they would be more desirable.

A small population of incels advocates for **child sexual exploitation**. These incels call for a lowered age of consent since they think that modern society raised the age limit in order to hinder men's access to women, during their most sexually desirable point.



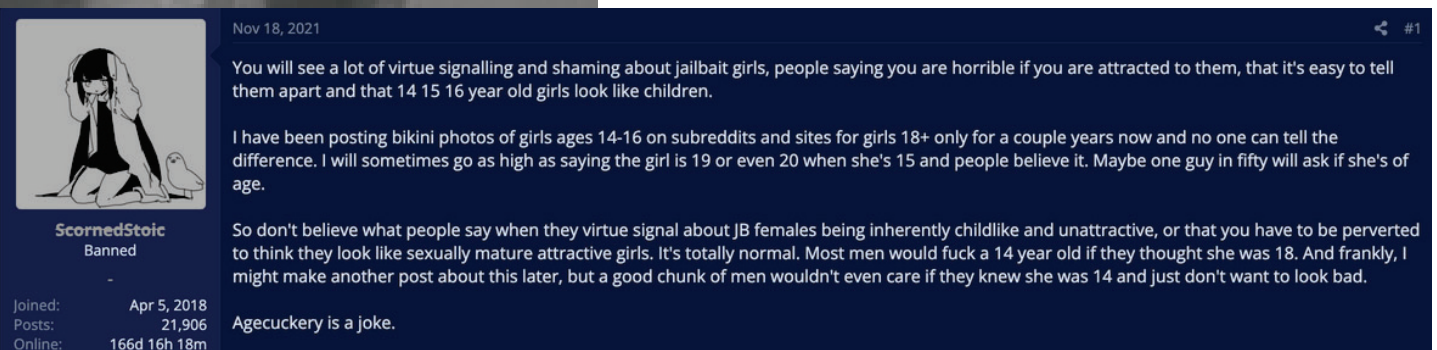
34 minutes ago #1

This seems like one of those "lies agreed upon by society"

So let's say you're some 13 year old girl, you've been in puberty for 3 years, but you're 3 years below the age of consent, and some 20 year old male tries to bang you. You know what sex is, you know sex can lead to pregnancy, you know that sex has the possibility of STD's, and you know how to use contraception.

With all those conditions met, how is she unable to give "informed" consent in this situation? People will claim "muh manipulation", but what does that even mean exactly? How does a truce manipulate a prime JB?

**LOW TIER INCEL**  
Recruit  
★★



Nov 18, 2021 #1

You will see a lot of virtue signalling and shaming about jailbait girls, people saying you are horrible if you are attracted to them, that it's easy to tell them apart and that 14 15 16 year old girls look like children.

I have been posting bikini photos of girls ages 14-16 on subreddits and sites for girls 18+ only for a couple years now and no one can tell the difference. I will sometimes go as high as saying the girl is 19 or even 20 when she's 15 and people believe it. Maybe one guy in fifty will ask if she's of age.

So don't believe what people say when they virtue signal about JB females being inherently childlike and unattractive, or that you have to be perverted to think they look like sexually mature attractive girls. It's totally normal. Most men would fuck a 14 year old if they thought she was 18. And frankly, I might make another post about this later, but a good chunk of men wouldn't even care if they knew she was 14 and just don't want to look bad.

Agecuckery is a joke.

**ScornedStoic**  
Banned

Joined: Apr 5, 2018  
Posts: 21,906  
Online: 166d 16h 18m

# THE PATRIARCHAL GOLDEN AGE

While interacting online in forums, incels are sometimes introduced to the idea that previous periods of American history were better for men's access to women. Like other groups within the Manosphere, incels want the world to return to a "patriarchal golden age" where men held their rightful place above women in society.

## APPEALING CHARACTERISTICS OF THIS ERA:

Traditional gender roles were accepted and followed

Monogamy was the social rule and adultery was prohibited

A man's appearance was largely irrelevant since romantic practices and women's dependence on men guided dating interactions

All men had access to women and their entitlement to sex was never denied

Men and women married early





# PILLING

Incels often discuss their acceptance of their worldview (ideology) in terms of “pills.”

The concept of “pills” was inspired by the movie, *The Matrix*, after a character took a pill in order to see the real world.

Each pill is essentially a school of thought that helps incels to identify their level of indoctrination.

It is not uncommon for incels to switch between pills as they further radicalize.



## BLUE PILL

The choice to believe a comforting lie that physical attraction is not the determining factor in social and sexual success.



## PURPLE PILL

Having a neutral stance on gender relations. Not on the "manosphere" side, not on the "feminist" side.



## RED PILL

Waking up to the reality that women are better off in society than men and therefore female repression is a myth.



## BLACK PILL

A nihilistic version of the redpill that accepts a reality where:

- Attractiveness determines romantic success
- Denial of this reality is supported by the media
- Alleged exclusion of incels from the gene pool amounts to oppression
- Incels are inevitably trapped in their celibacy and have no choice but to kill themselves or “lay down and rot” (LDAR).



## PINK PILL

The female incel's version of the blackpill.



## WHITE PILL

Acceptance of the blackpill perspective on the world and one's incel status but attempting to improve your life or find coping mechanisms rather than "lay down and rot".

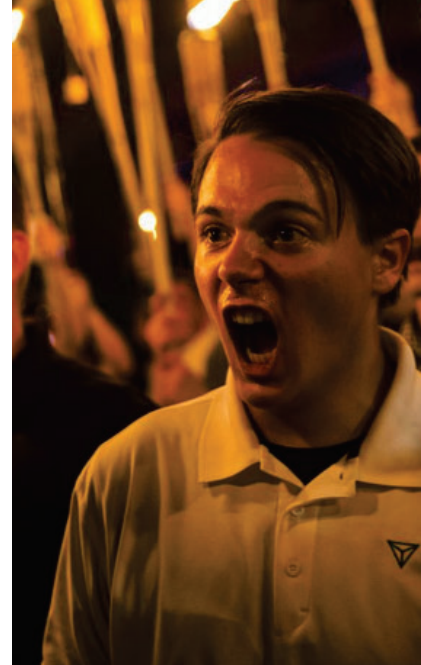


# FRINGE FLUIDITY

Some incels believe in other forms of extremism or belong to other extremist groups, which also hold deeply misogynistic views towards women.

Certain incels openly support far-right extremist ideologies and subscribe to racist, anti-semitic, and socially conservative views. These individuals may describe themselves as **stormcels** or **alt-right cels**.

Other incels may be vulnerable to jihadist recruitment because of shared misogyny and their desire to access wives and sex. Incels refer to joining jihadist groups to access sex as **jihadmaxxing**.<sup>26</sup>



Some incels **agree** with the oppression of women by jihadist organizations, which have sexually **exploited** women and **limited** them to the role of wives and mothers.

Consultations with experts suggest that violent extremist groups recruit from incel forums as they provide a pool of vulnerable and already disaffected individuals, which makes radicalization and recruitment easier.<sup>27</sup>

The willingness of some incels to engage with multiple differing ideologies may be driven by the shared outgroups between various extremist groups (e.g. anti-semitism) as well as shared ingroup anti-feminism and socially conservative values. This phenomenon is known as **'fringe fluidity.'**<sup>28</sup>

# THE RADICALIZATION PROCESS

The incel community lacks the organized structure and hierarchy found in many jihadist and far-right extremist groups.

The community is instead a loose grouping of individuals in which radicalization, at present, occurs wholly online. Online radicalization typically occurs horizontally through a pattern of mutual peer-to-peer pressure to accept a shared reality.<sup>29</sup> One form this radicalization process can take is the use of “flair” on forums denoting levels of member activity and by extension, their “seniority” on the forum. These individuals sometimes make use of their status as more seasoned forum posters to act as authority figures for new members and can expose them to more radical incel perspectives.

Behavior in online forums mainly focuses on discussions of how incels fit into society, gender relations, and the belief that it is pointless to be kind to women since appearance is all that matters.<sup>30</sup>

Incel mannerisms and ideology often appeal to the intersection of high intelligence and underappreciation. Being redpilled or blackpilled is presented as a “truth” that most of society is not privy to, which makes incels feel superior and elevates their in-group status.<sup>31</sup>

Eventually, incels come to view themselves as part of an “in-group” that the outside world or “out-group” does not understand or appreciate. Despite this shared mentality, incels are not a formal organization but rather a community of individuals with shared grievances.<sup>32</sup>





# KEY TERMS

---

## HOW INCELS REFER TO THEMSELVES:

**IKTHHFV:** the most authentic incels are kissless, touchless, hugless, handholdless, friendless, and virgin, (status description)

**NEET:** not in education, employment, or training

**Gymcel:** incels that go to the gym to try and become an alpha

**Rapecel/rapepill:** believe that sex can only be coercive for two reasons: women are not capable of making rational decisions and sexual relations should be based on a power mechanism in which the male is dominant

**Fakecels:** voluntary celibates on forums

**LDAR (Lay Down And Rot):** nihilistic acceptance of “blackpilled” incels who believe that there is no way out of their position in the social hierarchy and they are destined to be celibate forever

**Saint Alek:** Alek Minassian

**Saint Elliot/Supreme Gentleman:** Elliot Rodger

**Saint Yogacel:** Scott Beirle

**Omeegas:** men who have trouble interacting with women in general (even a beta)

## APPEARANCE RELATED TERMS:

**Looksmatch:** your equivalent in looks for the opposite sex

**Looksmaxing:** maxing out one’s own appearance (e.g. gymmaxing, SEA (South East Asia) maxxng)

**Looksism:** social bias against ugly people

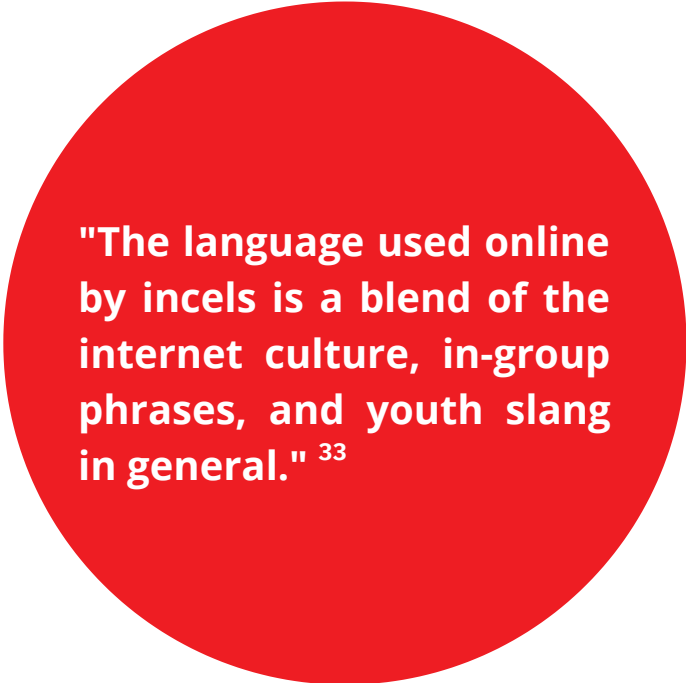
**LMS:** looks, money status

**Mogging aka Alpha Male of Group:** to be more attractive than someone

**Betabux:** when a less attractive man is in a relationship and providing for the woman financially

**Mewing:** changing your tongue posture to improve your jaw shape

**Decile system:** a hierarchy of physical attractiveness



"The language used online by incels is a blend of the internet culture, in-group phrases, and youth slang in general."<sup>33</sup>

# KEY TERMS CONTINUED

---

## TERMS RELATED TO WOMEN:

**NMAWOT:** never marry a woman over thirty  
**femoids/foids:** “female human organisms” associated with the pronoun “it” (a derogatory term for women)

**AWALT/EWALT:** all women are like that, enough women are like that

**Feminazi:** someone who claims to be a feminist but actually wants women to be superior to men

**Femtard:** term originates from the belief that feminism is a misandrist movement masquerading in the guise of promoting equality. Essentially someone who promotes equality through inequality.

**Juggernaut law:** even ugly women can still have an advantage in dating because of inherently greater value in the sexual marketplace

**Gynocentrism:** female privilege is a reality but male privilege is feminist propaganda

## RACIAL TERMS:

**Tyrone:** Black equivalent of a Chad

**Chadpreet:** South Asian equivalent of a Chad

**Chang:** East Asian equivalent of a Chad

**Blackcel:** Black incels

**Currycel:** Indian incels

**Ricecel:** Asian incels

**Ethnicel :** a non-white incel

**Big Black C\*ck:** Black men are more sexually appealing and can d\*ckmog others

## ACTIONS:

**Rope(ing):** committing suicide

**Ropfuel:** upsetting content that makes you want to kill yourself

**Day of Retribution** (aka **beta uprising; incel rebellion**): the day incels get back at women and Chads

**Chadfishing:** pretending to be a Chad in photos (like catfishing)

**Go ER:** committing mass violence; reference to Elliot Rodger

## TERMS FOR SUSPECTED OUTSIDERS:

**FBIcel:** refers to law enforcement pretending to be incels

**Fakecel:** a term for somebody pretending to be an incel who is not

**Glowie:** used for agencies like the ATF, FBI, etc. Their inability to blend into the native population's habits, patterns and speech make them stick out like a sore thumb, hence they "glow in the dark." This includes their inability/hesitation to use the major racial slurs, improper use of memes, and the pushing of mainstream political theories.

**Glowposting:** when law enforcement or any other similar organization creates posts online baiting potential criminals to reveal their intentions

**Fedjacket(ing):** making the case that somebody is a snitch

Please see appended glossary for additional terms.





# THE POTENTIAL FOR VIOLENCE

The vast majority of incels are not violent. However, studies show that perpetrators of mass violence often have a history of abuse and/or harassment toward women that is also common among some incels.<sup>34</sup>

The most frequent type of violence perpetrated or planned by incels is **self-directed violence** such as self-harm, suicidal ideations, and suicide. Online forums may attempt to exploit suicidal thoughts by encouraging individuals to go out in a spectacular fashion by committing a large-scale attack targeting civilians. Forum members often cite the 2014 Isla Vista attacker Elliott Rodger as an example and encourage suicidal incels to consider “**going ER.**”<sup>35</sup>

Incels may also engage in **interpersonal violence** especially physical assaults or murders targeting women, violence towards sex workers, and harassing or aggressive behavior towards women they know or in public.

Some incels may perpetuate **violence directed towards society as a whole** in the form of terrorist attacks, mass shootings, and vehicle attacks.<sup>36</sup>

Within the community, some who committed acts of mass violence as a result of their involuntary celibacy are referred to as “**saints**” because they have fought back against an allegedly repressive social hierarchy. Some incels express adoration and acceptance of mass violence committed by other incels and other attackers with similar misogynist beliefs.

**Incels incite mass violence on their forums either by posting a call to action or goading other forum posters, especially those exhibiting suicidal ideations.**

# POTENTIAL INDICATORS OF MASS VIOLENCE

*Not all individuals who display indicators will commit mass violence but the following have been shown to increase chances especially when occurring together.<sup>37</sup>*

## Posting

of video, manifesto, statement, or final will justifying violence

## Fighting

with family or friends over ideology

## Perpetrating

acts of interpersonal violence, especially when driven by ideology or general misogyny

## Purchasing

or attempting to gain access to firearms or other weapons

## Calling

others to violent action

## Producing

ideological content (e.g. maintaining a YouTube channel)

## Sharing

the intention to commit acts of violence or information about attack planning often with family, friends, or associates

## Praising

of previous violent incels or mass shooters (e.g. Dylann Roof, Virginia Tech, Nicholas Cruz)

## Hyperfixating

on activities common to the individual in the hours or days before violence

## Seeking

justification for violence or advice on suicidal ideation from online contacts

## Expressing

a strong belief in an extremist ideology to others

## Sexually Harassing

female relatives or associates about sexual activity or perceived sexual activity or engaging in other sexually deviant behavior (e.g. stealing underwear)

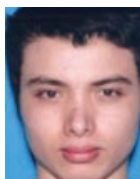
# KEY INCEL ATTACKS

1989



"Saint" Marc Lepine - Montreal  
Killed 14 women, specifically targeting feminists on the basis of his political opposition to feminism. Called the "original incel."

"Saint" Elliott Rodger - Isla Vista, CA  
Killed 6 by stabbing, shooting, and vehicle ramming.



2014

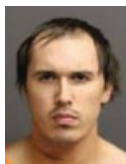


"Saint" Alek Minassian - Toronto  
Killed 10 in van attack, specifically targeting women. Posted that the incel "rebellion" had begun.

2018

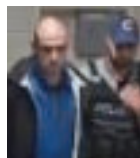


"Saint" Scott Beierle - Tallahassee, FL  
Shot and killed two women. Maintained a YouTube channel with incel content.



Brandon Clark - Utica, NY  
Stabbed victim to death and posted photos online. Admin of an incel gaming page.

2019



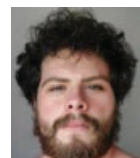
Alex Stavropoulos - Subury, Ontario  
Stabbed a pregnant woman in the neck because white women would not sleep with him.

2020



Armando Hernandez - Glendale, AZ  
Committed a mass shooting at Arizona mall, specifically targeting women and couples. None killed, three injured.

Jake Davison - Plymouth, UK  
Shot and killed 5 victims. Espoused incel and misogynistic ideology but did not consider himself an incel.



2021



# INCEL ATTACKERS

---



## **"SAINT" ELLIOTT RODGER**

**MAY 23RD, 2014 / 6 KILLED / ISLA VISTA, CALIFORNIA**

Stabbed three men in his apartment, shot three women in front of a sorority house, and shot and killed several pedestrians from his car. Wrote a 141-page manifesto detailing his beliefs in incel ideology and disdain for modern society. His manifesto has been cited by incel and incel-adjacent mass attackers.

*"I will arm myself with deadly weapons and wage a war against all women and the men they are attracted to."*

## **SHELDON BENTLEY**

**JULY 31, 2016 / 1 KILLED / EDMONTON, CANADA**

Killed a homeless man and blamed it on being an incel.



## **"SAINT" ALEK MINASSIAN**

**APRIL 23RD, 2018 / 10 KILLED / TORONTO, CANADA**

Committed the 2018 Toronto van attack. Posted that the "incel rebellion has already begun" and referred to the "supreme gentleman Elliot Rodger" before his attack. Incels view him as a hero and there is a song written about him.

*"We don't necessarily wish to ah kill the normies but we do wish to subjugate them ah in order to make them understand that the uhm – that our type is ah the more superior one."*







## **ALEX STAVROPOULOS**

**JUNE 3, 2019 / 0 KILLED / SUBURY, ONTARIO**

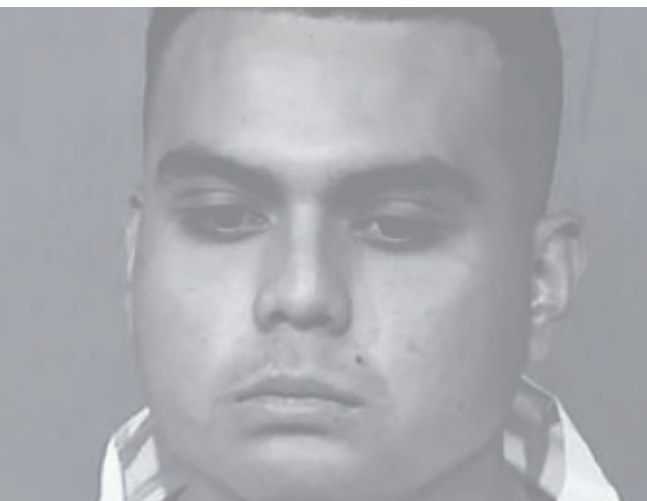
Stabbed a pregnant woman in the neck. Said he committed the attack because women would not sleep with him.<sup>38</sup>

*"I was angry at white women. I like white women, but they won't f\*\*\* me. So, I wanted to see what it felt like (to kill a female child) ... I had my mindset. I was going to kill a child and was waiting for the right opportunity."*

## **BRANDON CLARK**

**JULY 15, 2019 / 1 KILLED / UTICA, NY**

Met his victim online and planned to meet her at a concert. Stabbed his victim before posting the photos online.<sup>39</sup> Acted as an admin on a "Darkcel Gaming" page online. It was reported that his father had previously attacked his mother with a knife. Brandon wrote a letter to a friend and stated that he murdered Bianca because he could not handle the thought of her walking out of his life.



## **ARMANDO HERNANDEZ**

**MAY 20, 2020 / NONE KILLED / GLENDALE, ARIZONA**

Committed a mass shooting at an Arizona mall, specifically targeting women and couples. Three people were injured. Self-identified as an incel.



## **TRES GENCO**

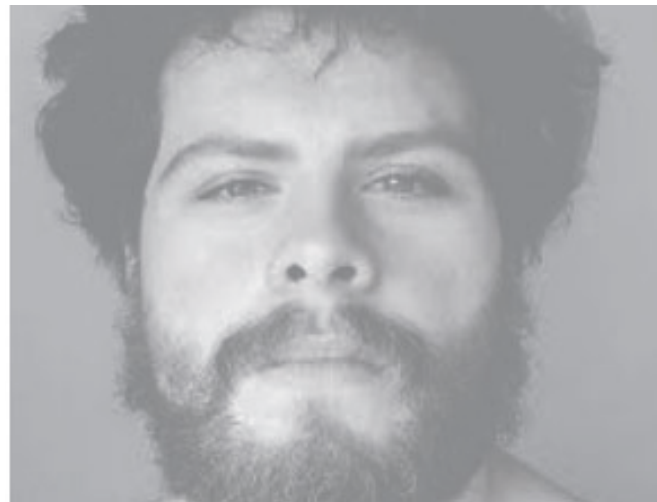
**July 21, 2021 / None Killed / Cincinnati, Ohio**

Planned a shooting at a university in Ohio, was arrested by local police after conducting surveillance at the university. Self-identified as an incel, was a frequent poster on incel sites, and wrote a manifesto. Genco purchased a Glock 17 and ammunition. He also received Army training before being released for poor performance.

## **JAKE DAVISON**

**April 23rd, 2018 / 10 Killed / Toronto, Canada**

Plymouth shooter who espoused misogynistic language and incel discourse, but did not consider himself an incel. Mental health was a big factor in this case. Davison felt he missed out on teenage romance and argued with his mother (the first victim of his shooting) about his misogynist outlook.



# INCEL ADJACENT ATTACKERS\*

---



## **“SAINT” MARC LEPINE**

**December 6th, 1989/ 14 Killed / Montreal, Canada**

Specifically targeted a list of feminists on the basis of his “political” opposition to feminism. Called the “original incel” and a “saint,” Lepine's attack date is celebrated by incels.

*“Because I have decided to send the feminists, who have always ruined my life, to their Maker.”*

## **GEORGE SODINI**

**August 4, 2009 / 4 Killed / Collier Township, Pennsylvania**

Motivated by his anger at being single and not having had sex for 19 years. Sodini expressed resentment of women on his blog and in a note he left in his bag. Killed four and injured nine at an LA Fitness gym.<sup>40</sup>

*“Thanks, mum and brother (by blood alone). And dad, old man, for TOTALLY ignoring me through the years. All of you DEEPLY helped me be this way.”*



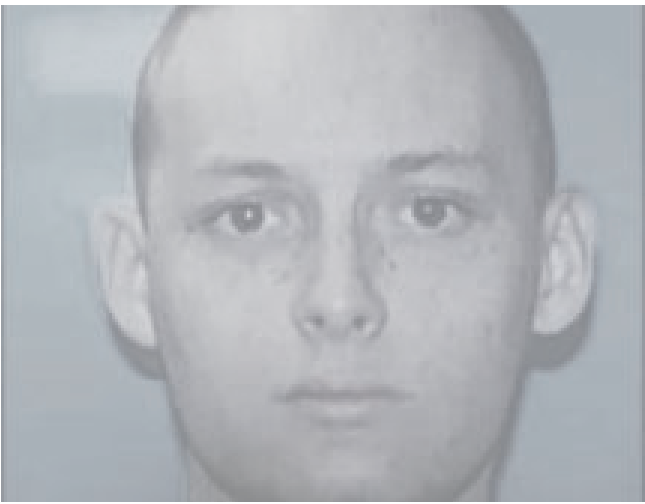
## **CHRISTOPHER HARPER-MERCER**

**October 1st, 2015 / 9 Killed / Umpqua College, Oregon**

Shot and killed nine before killing himself. Wrote a 6-page manifesto blaming his lack of friends, a job, and girlfriend as a motivator and said Elliot Rodger was “elite.” Not on incel forums, but was on 4 chan’s /r9k/ beforehand.

*“I had no friends, no girlfriend, was all alone. I had no job, no life, no successes.”*

\*Attackers with similar misogynist beliefs that did not identify as incels.



## **WILLIAM ATCHISON**

**December 7, 2017 / 2 Killed / Aztec, New Mexico**

Made statements online showing admiration for Elliot Rodger. Killed two students at Aztec High School before committing suicide. Previously expressed alt-right and racist sentiments.

*"[Women] should be demoted to sex objects to be sold by their fathers to all genetically superior people intellectuals."*

41

## **"SAINT" SCOTT BEIERLE**

**November 2nd, 2018 / 2 Killed / Tallahassee, Florida**

Committed the 2018 Tallahassee shooting, specifically targeting women before killing himself. There is no evidence that he was on incel forums but he is now nicknamed "St Yogacel." He maintained a misogynistic YouTube channel that has been deleted/archived.



## **NIKOLAS CRUZ**

**November 14th, 2018 / 17 killed / Parkland, Florida**

There is a dispute over whether he is an incel. Committed the Parkland shooting and made comments about Elliot Rodger on YouTube.

*"Everything and everyone is happy except for me. I want to kill people but I don't know how I can do it."*



# KEY DOCUMENTS & WEBSITES

---

## Key Documents

- Elliot Rodger's manifesto
- Christopher Harper-Mercer manifesto
- Marc Lepine's letter/manifesto
- Alek Minassian's interview transcript
- William Atchison's collection of online postings
- George Sodini's diary
- *The Game* by Neil Strauss
- *The Manosphere: A New Hope for Masculinity* by Ian Ironwood
- *The New Gay Liberation: Escaping the Fag End of Feminism* by Matthew Lye

## Websites

- 4Chan
  - 4/chan/b
  - 4/chan/r9k
  - 4/chan/pol\*\*
- Reddit
  - /r/TheRedPill\*\*
  - /r/mgtow\*\* (Men Going Their Own Way)
  - /r/MensRants
  - /r/MensRights\*\*
  - r/stillgoingmyownway\*\*
- incels.is
- Kiwifarms (doxing website)
- Incel TV: "a platform for blackpill and lookism content" (You Tube)
- AVFM (A voice for men)
- Theredpillroom.blogspot.ie
- Looksmax.me
- Neets.me
- Sluthate.com\*\*
- AngryHarry.com\*\*
- Incelistan.net\*\*
- Manosphere.com\*\*

\*\* Indicates website was offline at the time of publication.

# References

---

1. Radicalisation Awareness Network. "Incels: A First Scan of the Phenomenon (in the EU) and its Relevance and Challenges for P/CVE", European Commission, 18 October 2021, [https://ec.europa.eu/home-affairs/whats-new/publications/incels-first-scan-phenomenon-eu-and-its-relevance-and-challenges-pcve\\_en](https://ec.europa.eu/home-affairs/whats-new/publications/incels-first-scan-phenomenon-eu-and-its-relevance-and-challenges-pcve_en)
2. Jones, David, Hastings, Zoe, and Stolte, Laura. "Involuntary Celibates: Background for Practitioners". Organization for the Prevention of Violence, Edmonton, AB, 2020, pp. 1–13, <https://preventviolence.ca/publication/incels-background-for-practitioners/>
3. Statista Research Department. "U.S. Unemployment Rate: Adjusted, October 2021." Statista, 11 Nov. 2021, <https://www.statista.com/statistics/273909/seasonally-adjusted-monthly-unemployment-rate-in-the-us/#:~:text=U.S.%20monthly%20unemployment%20rate&text=A%20trend%20of%20decreasing%20unemployment,to%208.1%20percent%20in%202020>.
4. "Online Poll Results Provide New Insights into Incel Community." Anti-Defamation League, 10 September 2020. <https://www.adl.org/blog/online-poll-results-provide-new-insights-into-incele-community>.
5. "Understanding and Preventing Incel Violence in Canada." Moonshot, 16 September 2021, <https://moonshotteam.com/preventing-incele-violence-in-canada/>.
6. "Online Poll Results Provide New Insights", Anti-Defamation League.
7. Ibid.
8. Speckhard, Anne, Ellenberg, Molly, Morton, Jesse, and Ash, Alexander. "Involuntary Celibates' Experiences of and Grievance Over Sexual Exclusion and the Potential Threat of Violence Among Those Active in an Online Forum", *Journal of Strategic Security*, vol. 14, no. 2 2021, pp. 89-121, <https://digitalcommons.usf.edu/cgi/viewcontent.cgi?article=1910&context=jss>
9. Ibid.
10. Ibid.
11. Ibid.
12. Consultation with Incel Intervention Provider. Personal Interview, October 2021.
13. "Understanding and Preventing", Moonshot, pp. 36-37.
14. Stijelja, Stefan. "The Psychosocial Profile of Involuntary Celibates (Incels): A Review of Empirical Evidence" *PsyArXiv*, Retrieved October 10, 2021. pp .5-6
15. Blackburn, Jeremy, Horta Ribeiro, Manoel, Bradlyn, Barry, De Cristofaro, Emiliano, Stringhini, Gianluca, Long, Summer, Greenberg, Stephanie. Zannettou, Savvas. "The Evolution of the Manosphere Across the Web" *Proceedings of the International AAAI Conference on Web and Social Media*, vol. 15, 2020, pp. 3
16. Ibid, pp. 5.
17. Ibid, pp. 2.
18. Ibid, pp. 4.

19. Ibid. pp. 8.
20. "Understanding and Preventing", Moonshot, pp. 39.
21. Blackburn, pp.5
22. "Understanding and Preventing", Moonshot, pp. 1-31.
23. Ibid.
24. "Incels: A Guide to Symbols and Terminology." Moonshot, 8 June 2020, pp.5,  
<https://moonshotteam.com/incels-symbols-and-terminology/>
25. Ging, Debbie. "Alphas, Betas, and Incels: Theorizing the Masculinities of the Manosphere." *Men and Masculinities*, vol. 22, no. 4, 2017, pp. 638–657.  
<https://doi.org/10.1177/1097184x17706401>.
26. "Symbols and Terminology", Moonshot, pp. 12.
27. Consultation with Incel Intervention Provider. Personal Interview, Oct. 2021.
28. Gartenstein-Ross, Daveed and Blackman, Madeleine. "Fluidity of the Fringes: Prior Extremist Involvement as a Radicalization Pathway", *Studies in Conflict & Terrorism*, 2019  
DOI: 10.1080/1057610X.2018.1531545
29. Brzuszkiewicz, Sara. "Incel Radical Milieu and External Locus of Control", *The International Centre for Counter-Terrorism – The Hague (ICCT) Evolutions in Counter-Terrorism*, vol.2  
November 2020, pp. 1-20.
30. Ibid.
31. "Understanding and Preventing", Moonshot, pp. 39
32. Zdjelar, Vanja. "Alone Together: Exploring Community on an Incel Forum", *Thesis*, Simon Fraser University, 2020, pp. 17
33. Leidig, Eviane. "Why Terrorism Studies Miss the Mark When It Comes to Incels." *International Centre for Counter-Terrorism*, 31 August 2021, <https://icct.nl/publication/why-terrorism-studies-miss-the-mark-when-it-comes-to-incels/>.
34. Ibid.
35. "Symbols and Terminology", Moonshot. pp. 7-8.
36. Ibid.
37. ODNI. Homegrown Violent Extremist (HVE) Mobilization Indicators,  
[https://www.dni.gov/files/NCTC/documents/news\\_documents/NCTC-Unclassified-HVE-Mobilization-Indicators-Web.pdf](https://www.dni.gov/files/NCTC/documents/news_documents/NCTC-Unclassified-HVE-Mobilization-Indicators-Web.pdf); Gill, Paul, Horgan, John, & Deckert, Paige. "Bombing Alone: Tracing the Motivations and Antecedent Behaviors of Lone-Actor Terrorists", *Journal of Forensic Sciences*, vol. 59, no.2, 2014; Consultation with Incel Expert on Mobilization,  
Personal Interview, September 2021.
38. Jones et al., pp. 1.
39. Ibid, pp. 11.
40. Brian J. Van Brunt, Bethany S. Van Brunt, Chris Taylor, Nicole Morgan, and Jeffery
41. Solomon. Violence and Gender. "The Rise of the Incel Mission-Oriented Attacker", *Violence and Gender*, December 2021. pp. 3, <http://doi.org/10.1089/vio.2020.0099>  
Langman, Peter, and Aysha Lonich. William Atchison Online - School Shooters Info. pp. 28,  
[https://schoolshooters.info/sites/default/files/atchison\\_online\\_1.0.pdf](https://schoolshooters.info/sites/default/files/atchison_online_1.0.pdf).

## Incel Glossary

**AMOG:** stands for "alpha male of the group." When conjugated, AMOGing means that another alpha male is interfering with your attempt to access sex in a social setting.

**Andreas Lubitz:** a German pilot who killed 150 people by crashing a plane after his girlfriend broke up with him. Some incels consider him a sympathetic character.

**Anteface:** a cosmetic surgery term that refers to how the middle and lower parts of a face protrude from the skull. In men, a straight protrusion is preferred.

**Aromantic:** someone who cannot form romantic attachments.

**Asexual:** someone who lacks sexual impulses.

**AWALT / EWALT:** all women are like that / enough women are like that.

**Becky(s):** considered one of the "betas," Beckys are considered "average" in appearance. Incels think that Becky's aspire to be in sexual relationships with Chads, but will settle for less attractive men after they become older than 25 when their desirability decreases. Incels think that they are entitled to sex and attention from Beckys because they are lower in attractiveness than the unattainable Stacy.

**Beta:** a non-alpha man. Above "omegas" but below "Chads," the term is derived from the animal hierarchy.

**Betabuxx:** a man who (incels assume) only has a partner because they are financially supporting the woman.

**Big Black C\*ck:** the belief that Black men are more sexually appealing due to their reproductive organs (incels believe that they can d\*ckmog others).

**Black Knight:** a man who is intentionally hostile towards women.

**Blackcel:** a Black incel.

**Blackpill:** a nihilistic version of the redpill. In the incel context, it refers to waking up to the reality that: attractiveness determines romantic success, denial of this reality is supported by the media, whose alleged exclusion of incels from the gene pool amounts to oppression, and incels are inevitably trapped in their celibacy. They have no choice but to kill themselves or "lay down and rot."



**Bluepill:** the preference of believing in a comforting or convenient lie, especially when it concerns a person's worldview, with emphasis on the pretense or opinion that goes contrary to the research suggesting physical attraction is utmost in social or sexual situations.

**Bodyguard Hypothesis:** women choose the most dominant man that they can obtain in order to be protected from other men.

**Briffault's Law:** women associate with men only when they benefit from it.

**C\*ck Carousel:** when women have sex with as many alpha men as possible.

**-cel:** a suffix that indicates why a man may be unable to access sex (e.g. wristcels have thin wrists and are deemed unattractive and mentalcels have mental health issues that prevent them from dating).

**Chad(s):** physically attractive men “alphas” who are deemed desirable and display traditional masculine characteristics.

**Chadfishing:** pretending to be a Chad in photos (like catfishing).

**Chadpreet:** the South Asian equivalent of a Chad.

**Chadsexual:** when a person claims to be a lesbian until an attractive enough man (a Chad) comes along.

**Chang:** the East Asian equivalent of a Chad.

**Cope:** a short-term way incels make themselves feel better about the world and their celibacy status

**Cuck:** when a man's partner cheats on him with another man.

**Currycel:** a South Asian incel

**Day of Retribution (aka beta uprising; incel rebellion):** the day incels get back at women and Chads.

**Decile system:** a hierarchy of physical attractiveness.

**Dominance Hierarchy:** when each member of an animal group had an agreed-upon rank.

**Emcel:** an incel who can not find a relationship due to an inability to bond with a partner emotionally.

**Ethnicel:** a non-white incel.

**F\*ck-off signals:** signs that a woman is not interested in someone romantically.

**Fakecel(s):** a term for somebody pretending to be an incel but is not (e.g voluntary celibates on forums).

**Fakeup:** makeup (also referred to as "war paint" by incels). Incels view makeup as a form of looksmaxxing.

**FBIcel:** law enforcement pretending to be incels.

**Fedjacket(ing):** making the case that somebody is a snitch.

**Feminism:** incels believe that feminism is the process why which women take credit for male innovations. Incels further believe that celibate men are responsible for most positive innovations in society. Feminists are sometimes referred to as "Feminazis."

**Feminization:** social norms that enforce feminine behavior. Incels believe that society stopping "men's infidelity" and other "masculine" traits are forcing men to be less masculine.

**Femoids/foids:** "female human organisms" associated with the pronoun "it" (female term for women). Short for femoids.

**Fisherian Runaway:** when "sexual selection" can lead to sometimes unhealthy exaggerated masculine traits. Incels and people in the manosphere use this to criticize women's romantic choices and sexual selection.

**Fuel:** a suffix that indicates strong emotion (e.g. lifefuel is something that gives incels the internal drive to keep living).

**Glowie:** used for agencies like the ATF, FBI, etc. Their inability to blend into incel's habits, patterns, and speech make them stick out like a sore thumb, hence they "glow in the dark." *"The most common trappings of government shills are their inability/hesitation to use the major racial slurs, improper use of memes, and the pushing of mainstream political theories."*

**Glowposting:** when law enforcement or any other such organization creates posts online baiting potential criminals to reveal their intentions.

**Go ER:** committing a mass attack (going Elliott Rodger).

**Gymcel:** incels that go to the gym to try and become an alpha.

**Gynocentrism:** female privilege is a reality but male privilege is feminist propaganda.

**Hapacel:** a half Asian, half white incel.

**Hypergamy:** the act of marrying or forming a sexual relationship with a person of a superior sociological background.

**Incelosphere:** a group of online incel communities.

**Indicator of Interest / IOI:** an indicator that a woman is interested in someone romantically. This term comes from the Pick-Up Artist community.

**It's over:** a common phrase blackpill incels use to signal their hopelessness.

**JBW:** short for "just be white" which is the belief that women will mainly choose men.

**JFL:** short for "just f\*cking lol" which indicates disbelief.

**Jihadmaxxing:** joining a violent jihadist group to obtain a wife. Violent jihadist groups like ISIS often promise arranged marriages for those joining.

**Juggernaut law:** even ugly women can still have an advantage with dating.

**Kiwi Farms:** a forum and doxing website that incels believe is anti-incel, although some incels do use the website as well.

**KTHHFV:** a status description indicating that the "most authentic incels are kissless, touchless, hugless, handholdless, friendless, and virgins."

**LDAR (Lay Down and Rot):** nihilistic acceptance of "blackpilled" incels.

**LMS:** looks, money status.

**Loli:** short for lolita, it refers to pre-pubescent and teen girls. A lolicon is someone who is attracted to these girls.

**Looksism:** social bias against ugly people.

**Looksmatch:** your equivalent in looks for the opposite sex.

**Looksmaxing:** maxing out one's own appearance (e.g. gymmaxing).

**Meeks:** refers to the belief that women are only attracted to looks, without any regard to character or other aspects of a personality. The term comes from felon Jeremy Meeks who began a modeling career from his mugshot.

**Mewing:** changing your tongue posture to improve your jaw shape.

**Mogged / Mog / Mogs:** suffix indicating being dominated by another person (e.g. heightmogged is when someone is taller than you).

**MSM / Mainstream Media:** reputable news outlets that incels feel are lazy and produce misinformation about incels and incel-adjacent causes or communities.

**NEET:** not in education, employment, or training.

**Neoteny:** adults with youthful or childlike features.

**NMAWOT:** never marry a woman over thirty.

**Normie:** an average looking person.

**Omega(s):** men who have trouble interacting with women in general (even a beta).

**Pinkpill:** the femcel version of the blackpill. A femcel's brand of philosophy.

**-philia:** a suffix indicating a preference or attraction.

**Provisioning:** the exchange of money, security, or other desirable things for sex. Incels believe this is how betas obtain girlfriends and wives.

**Pump and Dump:** having sex with a woman who wants a relationship when you do not want one.

**Purplepill:** the stance of being neutral or on the fence with regards to gender relations; i.e. not on the Manosphere side, nor on the feminist side.

**Rapecel / rapepill:** the belief that sex can only be coercive because: i) women are unable to make rational decisions so men should decide for them and ii) because sexual relations should be based on male dominance and female submissiveness.



**Redpill:** confronting the true pretense of an aspect of a particular thing, especially in regards to the mechanics of socialization. For incels, this means accepting that women have an advantage over men and becoming an alpha male will allow them to rig the system back in their favor.

**Ricecel:** East or South Asian incel.

**Roastie:** a sometimes facetious term that comes from the belief that women have stretched labia due to having sex with multiple men.

**Rope(ing):** committing suicide.

**Ropfuel:** upsetting content that makes you want to kill yourself.

**Saint Alek:** Alek Minassian

**Saint Elliot / Supreme Gentleman:** Elliot Rodger

**Saint Yogacel:** Scott Beirle

**Sanpaku Eyes:** eyes that have whites exposed under the iris. Incels believe this may indicate chemical or emotional issues.

**Scelerophilia:** when women are attracted to men that possess antisocial "bad boy" tendencies.

**Sexual Selector:** also known as "sexual gatekeeping." The person who has the decision making power when choosing a partner.

**Social Justice Warrior /SJW:** someone who is overly dedicated to social causes. Incels often view these people as disingenuous. Generally used as an insult.

**Soyciety:** the belief that society has become weak due to "pandering" to things like left-wing politics and feminism.

**Stacy(s):** the female equivalent of the Chad. Physically attractive women who are considered "alphas". Stacy's are unattainable for most men and incels.

**Stormfrontcels:** alt-right incels.

**Sui:** suicide

**Transmaxxing:** also known as "trannymaxxing." Refers to changing your gender in an attempt to access sex.

**Triggered:** another word for "angry" or "upset." It is usually used once someone becomes defensive online.

**Tutorial Island:** named after a tutorial island map in a game called Runescape, this term refers to the Phillippines where incels believe they can practice having sex and dating women.

**Tyrone:** the black equivalent of a Chad, usually used in a racist manner.

**Virtue Signaling:** an action to show that someone complies with social norms to be agreeable.

**Volcel:** someone who could have sex if they wanted to ("voluntary celibate"). Some incels believe that women can only be volcels, not incels. Sometimes called "fakecels."

**Vox Day:** an alias of an alt-right, anti-feminist named Theodore Beale.

**Whitepill:** the acceptance phase of the blackpill and therefore seeking to assimilate that knowledge to improve your life, or become a volcel. The term has also been used by some to refer to the negation of the black pill (i.e. another form of the bluepill).

**Women are wonderful / WAW:** the incel concept that women are generally viewed in a more positive light than men, despite the fact that they are "worse" in many aspects.

**Women don't owe you anything:** incels believe this is an excuse to explain why women are "less sexually generous than men."

**Workcel:** an incel whose job prevents them from engaging in sexual intercourse, mainly due to a lack of free time.